

data sheet

### Cold Beam Freeze roof narrow

specifications for the Cold Beam Freeze roof narrow

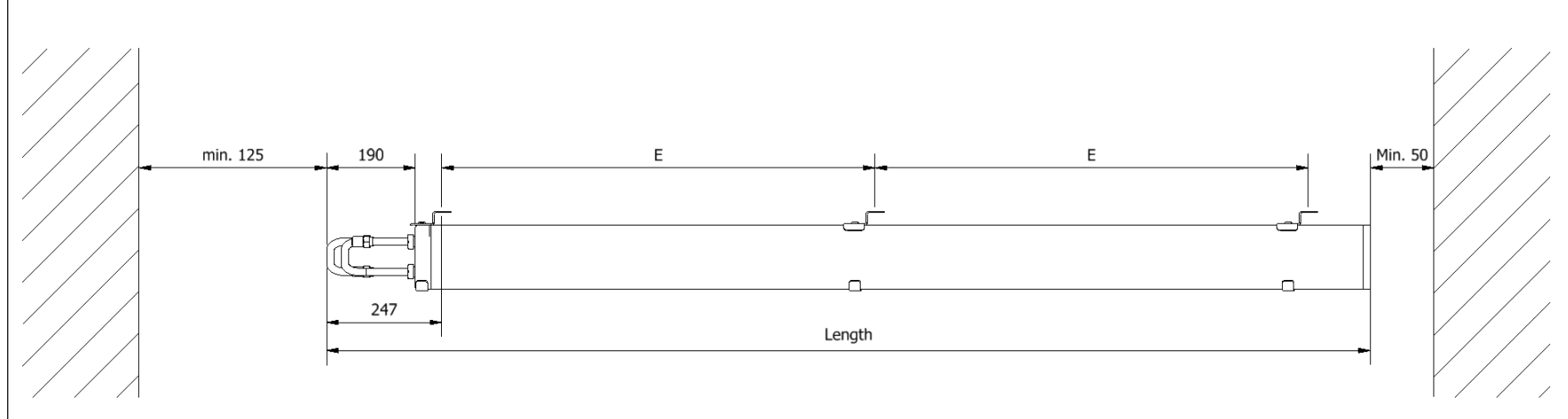
English



type	number	module	1500	2000	2500	3000	3500	4000			Rev 2.0
CBFr	2 / 3 / 4	1000									28-08-2019

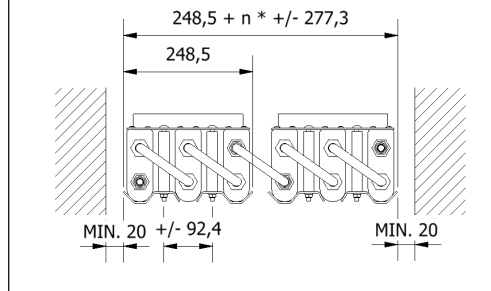
**dimensions**

**side view**

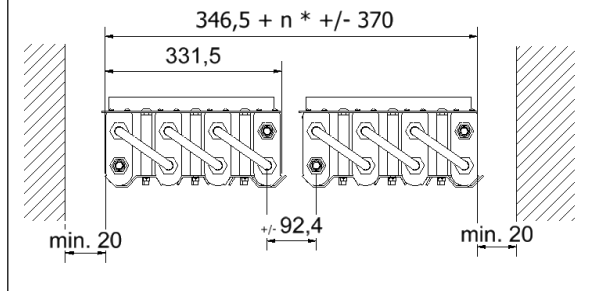


**front view**

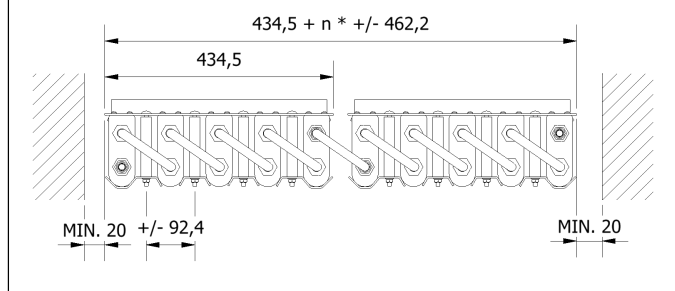
**3 pack roof mounted**



**4 pack roof mounted**



**5 pack roof mounted**



All sizes are presented in millimeters. See for installation the BoTemp instruction manual.

<b>data sheet</b>	<b>Cold Beam Freeze roof narrow</b>	<b>BOTEMP</b> <i>green refrigeration</i>
specifications for the Cold Beam Freeze roof narrow		
English		

type	number	module								Rev 2.0
CBFr	2 / 3 / 4	1000	1500	2000	2500	3000	3500	4000		28-08-2019

**dimensions**

length	2 / 3 / 4 pack	1209	1709	2209	2709	3209	3709	4209	
suspension E	2 / 3 / 4 pack	2 x 500	2 x 650	2 x 930	3 x 750	3 x 930	4 x 830	4 x 930	[mm]
width	single beam								[mm]
	2 pack								[mm]
	3 pack								[mm]
	4 pack								[mm]
	5 pack								[mm]

**general tolerances** from 400 up to 1000 ±8 mm over 1000 up to 2000 ±12 mm over 2000 up to 4000 ±16 mm

**weight**

weight	single beam	7,6	11,5	15,3	19,1	22,9	26,7	30,6	
	2 pack	20,3	29,1	37,8	47,2	55,9	65,3	74,1	[kg]
	3 pack	30,6	43,7	56,8	70,9	84,0	98,1	111,2	[kg]
	4 pack	41,0	58,6	76,1	94,9	112,4	131,3	148,8	[kg]
	5 pack	51,5	73,4	95,3	118,9	140,8	164,5	186,3	[kg]

Mount each cold beam package with sufficient M10 bolts in a reinforced insulated ceiling. avoid cold bridges. See for installation the BoTemp instruction manual.

All sizes and weights are subject to changes. BoTemp has the right to change this without prior informing the client.

**holdover capacity**

capacity	single beam	373	560	746	933	1119	1306	1492	
	2 pack	746	1119	1492	1865	2238	2611	2984	[Wh]
	3 pack	1119	1679	2238	2798	3357	3917	4476	[Wh]
	4 pack	1492	2238	2984	3730	4476	5222	5968	[Wh]
	5 pack	1865	2798	3730	4663	5595	6528	7460	[Wh]
	radiation surface	single beam	0,33	0,50	0,67	0,83	1,00	1,17	1,33
	2 pack	0,67	1,00	1,33	1,67	2,00	2,33	2,66	[m²]
	3 pack	1,00	1,50	2,00	2,50	3,00	3,50	4,00	[m²]
	4 pack	1,33	2,00	2,66	3,33	4,00	4,66	5,33	[m²]
	5 pack	1,67	2,50	3,33	4,16	5,00	5,83	6,66	[m²]

**refrigeration circuit**

length	single beam	2,2	3,2	4,2	5,2	6,2	7,2	8,2	
	2 pack	4,6	6,6	8,6	10,6	12,6	14,6	16,6	[m]
	3 pack	6,9	9,9	12,9	15,9	18,9	21,9	24,9	
	4 pack	9,3	13,3	17,3	21,3	25,3	29,3	33,3	
	5 pack	11,7	16,7	21,7	26,7	31,7	36,7	41,7	
	volume	single beam	0,29	0,42	0,56	0,69	0,82	0,95	1,09
	2 pack	0,61	0,87	1,14	1,40	1,67	1,93	2,20	
	3 pack	0,92	1,32	1,72	2,11	2,51	2,91	3,31	
	4 pack	1,23	1,77	2,30	2,83	3,36	3,89	4,42	
	5 pack	1,55	2,21	2,88	3,54	4,20	4,87	5,53	

hairpin tube size ODxD 16x13 mm stainless steel 1.4404 / AISI 316L design pressure 30 bar

## Cold Beam Freeze roof narrow

specifications for the Cold Beam Freeze roof narrow

English



type	number	module							Rev 2.0
CBFr	2 / 3 / 4	1000	1500	2000	2500	3000	3500	4000	28-08-2019

pressure drop refrigerant DX									unit
single module	R452a								[Pa]
2 pack									
3 pack									
4 pack									
pressure drop coolant PS									unit
single module	Therminol D12								[Pa]
2 pack									
3 pack									
4 pack									