

data sheet

Cold Beam Chill roof narrow

specifications for the Cold Beam Chill roof narrow

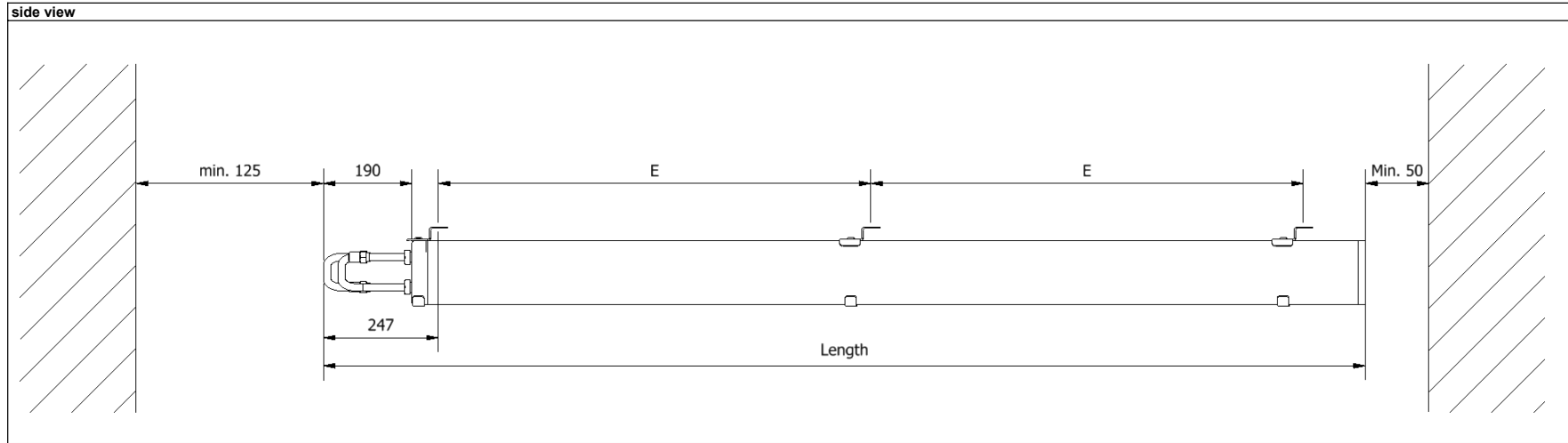
English



type	number	module	1500	2000	2500	3000	3500	4000			Rev 2.0
CBCr	2 / 3 / 4	1000									28-08-2019

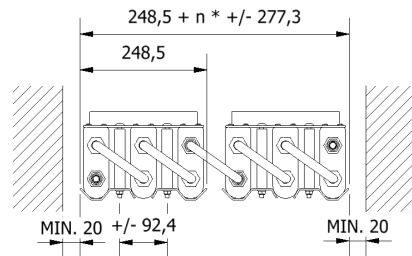
dimensions

side view

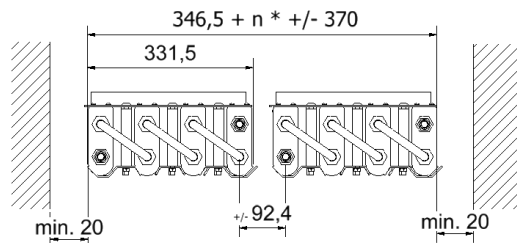


front view

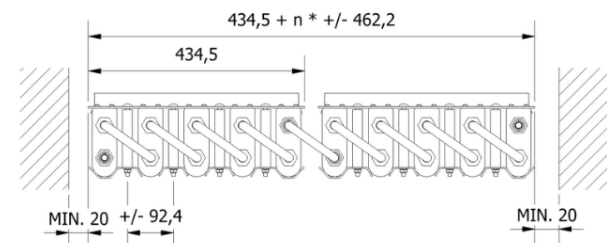
3 pack roof mounted



4 pack roof mounted



5 pack roof mounted



All sizes are presented in millimeters. See for installation the BoTemp instruction manual.

data sheet

Cold Beam Chill roof narrow

specifications for the Cold Beam Chill roof narrow

English



type	number	module								Rev 2.0
CBCr	2 / 3 / 4	1000	1500	2000	2500	3000	3500	4000		28-08-2019

dimensions

length	2 / 3 / 4 pack	1209	1709	2209	2709	3209	3709	4209	[mm]
suspension E	2 / 3 / 4 pack	2 x 500	2 x 650	2 x 930	3 x 750	3 x 930	4 x 830	4 x 930	[ul x mm]
width	single beam	50							[mm]
	2 pack	190							[mm]
	3 pack	248,5							[mm]
	4 pack	346,5							[mm]
	5 pack	434,5							[mm]

general tolerances from 400 up to 1000 ±8 mm over 1000 up to 2000 ±12 mm over 2000 up to 4000 ±16 mm

weight

weight	single beam	6.9	10.3	13.7	17.2	20.6	24.0	27.5	[kg]
	2 pack	18.8	26.8	34.8	43.3	51.3	59.9	67.9	[kg]
	3 pack	28.3	40.2	52.2	65.1	77.1	90.0	102.0	[kg]
	4 pack	38.0	53.9	69.9	87.2	103.2	120.5	136.5	[kg]
	5 pack	47.7	67.6	87.6	109.3	129.3	151.0	170.9	[kg]

Mount each cold beam package with sufficient M10 bolts in a reinforced insulated ceiling. avoid cold bridges. See for installation the BoTemp instruction manual.

All sizes and weights are subject to changes, BoTemp has the right to change this without prior informing the client.

holdover capacity

capacity	single beam	422	633	844	1055	1266	1477	1688	[Wh]
	2 pack	844	1266	1688	2110	2532	2954	3376	[Wh]
	3 pack	1266	1899	2532	3165	3798	4431	5064	[Wh]
	4 pack	1688	2532	3376	4220	5064	5908	6752	[Wh]
	5 pack	2110	3165	4220	5275	6330	7385	8440	[Wh]
radiation surface	single beam	0.33	0.50	0.67	0.83	1.00	1.17	1.33	[m²]
	2 pack	0.67	1.00	1.33	1.67	2.00	2.33	2.66	[m²]
	3 pack	1.00	1.50	2.00	2.50	3.00	3.50	4.00	[m²]
	4 pack	1.33	2.00	2.66	3.33	4.00	4.66	5.33	[m²]
	5 pack	1.67	2.50	3.33	4.16	5.00	5.83	6.66	[m²]

refrigeration circuit

length	single beam	2.1	3.1	4.1	5.1	6.1	7.1	8.1	[m]
	2 pack	4.4	6.4	8.4	10.4	12.4	14.4	16.4	
	3 pack	6.8	9.8	12.8	15.8	18.8	21.8	24.8	
	4 pack	9.1	13.1	17.1	21.1	25.1	29.1	33.1	
	5 pack	11.2	16.2	21.2	26.2	31.2	36.2	41.2	
volume	single beam	0.28	0.41	0.55	0.68	0.81	0.95	1.08	[dm³]
	2 pack	0.59	0.86	1.12	1.39	1.65	1.92	2.18	
	3 pack	0.90	1.30	1.70	2.09	2.49	2.89	3.29	
	4 pack	1.21	1.74	2.27	2.80	3.33	3.86	4.39	
	5 pack	1.49	2.15	2.82	3.48	4.14	4.81	5.47	

hairpin tube size ODxD 16x13 mm stainless steel 1.4404 / AISI 316L design pressure 30 bar

data sheet

Cold Beam Chill roof narrow

specifications for the Cold Beam Chill roof narrow

English



type	number	module							Rev 2.0
CBCr	2 / 3 / 4	1000	1500	2000	2500	3000	3500	4000	28-08-2019

pressure drop refrigerant DX									unit
single module	R452a								[Pa]
2 pack									
3 pack									
4 pack									
pressure drop coolant PS									unit
single module	Therminol D12								[Pa]
2 pack									
3 pack									
4 pack									